

# Tag Library

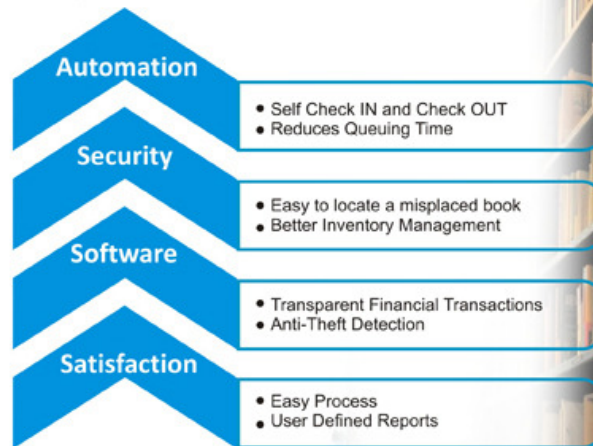
## Business Challenges:

Tag Library is an automated library management solution where the books and readers are managed automatically by tagging them with RFID Tags, thereby increasing the productivity and reducing the queuing time for issue and return of books.

## Work-flow of TagLibrary:



## Strategic Implications:

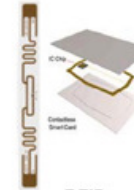


## Hardware



GATE ANTENNAS

- Two pedestals with internal RFID sensor are installed at exit gates
- Prevents any unauthorized movement of books out of the library thus eliminating theft.



RFID TAGS

- RFID tag is pasted on every book.
- Tag is identified on proper detection by Gate Antenna or Handheld Reader
- Tag Id is mapped to book id and its attributes in the database.
- Helps in easy identification of books and also in quick inventory management



RFID READER (HF)

- Access control of students, staff and management installed at various locations in the campus
- Hierarchical Access provided
- Smart Cards have to be flashed for Real-time data acquisition



BOOK DROP BOX

- A machine with a slot with a RFID reader integrated in it.
- User drops books to return to the library
- Generates automated receipt showing how many and which books have been returned.
- Avoids long queues at the book return counter during peak hours thus leading to increased customer satisfaction.

## Technical Specifications

- Web-based Portal
- Hierarchical access of information
- Operating Platform: Windows XP, Windows 2003 & Linux
- Web Application: Java
- Database used: Postgres7, MySQL5.0, DB2 and Oracle10g
- Integration with Tally for Accounts Module
- Open source architecture for integration with 3rd-party application



KIOSK MACHINE

- Senses a tagged product with the help of an inbuilt RFID sensor
- Displays related information like name of book, author, category of book etc.
- Helps managing customers in absence of library staff
- Patrons can issue or renew the books without the need of the library staff



HANDHELD READER

- The portable handheld reader can be moved along the items on the shelves without touching them
- Screens the complete book collection on the shelves thus helping in inventory management
- Helps searching for a misplaced book
- Locates any particular book requested



SMART CARDS

- Personalized Access cards for students, staff and management
- Only authorized personnel are allowed access
- IN time and OUT time are captured, thereby automatically calculating attendance



CUSTOMIZED STICKERS

- Comes with self-adhesive and placed on tags.
- Gives protection to tags and prevents tampering.
- Color-coded stickers can be provided for easy identification based on specified categories (like genre, duration, old/new, etc.)
- Gives a feeling of personalized library.

## Head Office:

Rasilant Technologies Pvt Ltd,  
A-309, Crystal Plaza, New Link Road,  
Andheri (W), Mumbai-400053, India.  
Ph: 022-2674-4640 / 41, 022-4209-2222.

<http://www.rasilant.com>