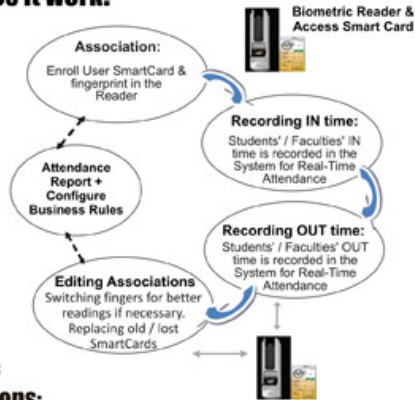


Tag ID

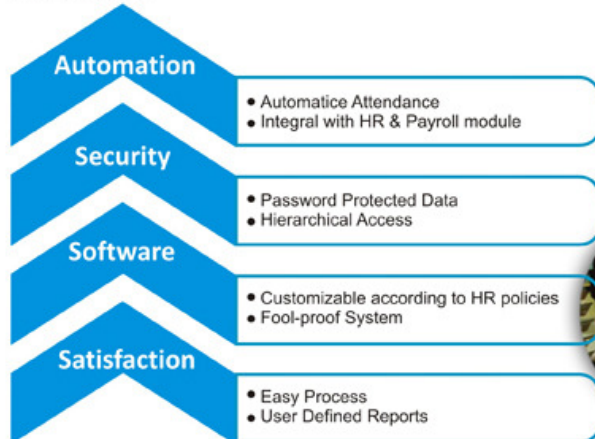
A PERSONALIZED ACCESS CONTROL & MANAGEMENT SOLUTION :

TagID is a new generation access control system, which is mainly used for any organization's personnel access, authentication, attendance, monitoring and salary generation purposes. The wide and extensive application of this system replaces all the paper-work and registers for employee information by a soft-copy database.

How does it work?



Strategic Implications:



Hardware



- **Attendance:** Record IN time for Employees & Faculties entering the Building
- **Secured Attendance:** Biometric technology ensures false or forged entries are discarded
- **Enroll:** New Faculties and Students



RFID READER (HF) (non biometric)

- Access control of students, staff and management installed at various locations in the campus
- Hierarchical Access provided
- Smart Cards have to be flashed for Real-time data acquisition

BIOMETRIC READER



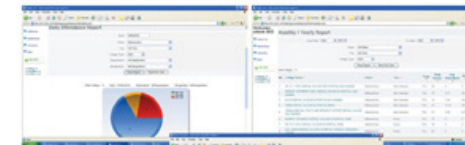
SMART CARDS

- Personalized Access cards for students, staff and management
- Only authorized personnel are allowed access
- Fingerprint sample is stored on the card if Biometric Readers are used.

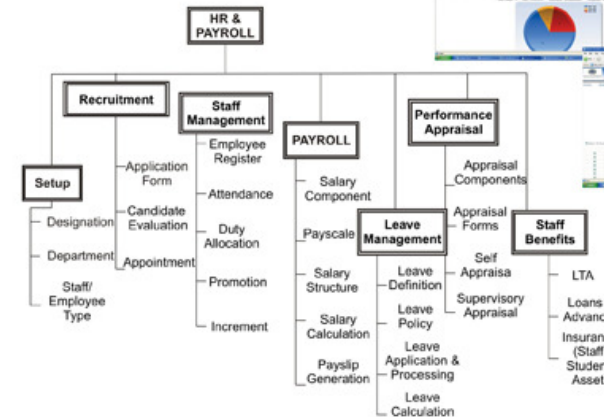
Technical Specifications

- Web-based Portal
- Hierarchical access of information
- Operating Platform: Windows XP, Windows 2003 & Linux
- Web Application: Java
- Database used: Postgres7, MySQL5.0, DB2 and Oracle10g
- Integration with Tally for Accounts Module
- Open source architecture for integration with 3rd-party application

Snapshots of Reports



HR & PAYROLL INTEGRATION



Head Office:
Rasilant Technologies Pvt Ltd,
A-309, Crystal Plaza,
New Link Road,
Andheri (W), Mumbai-400053,
India.
Ph: 022-2674-4640 / 41,
022-4209-2222.
<http://www.rasilant.com>